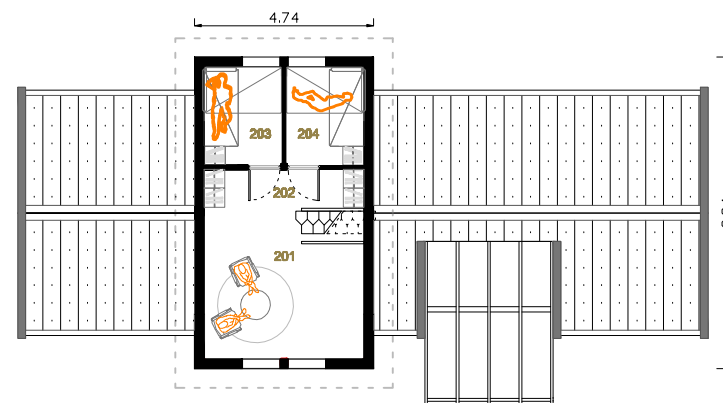
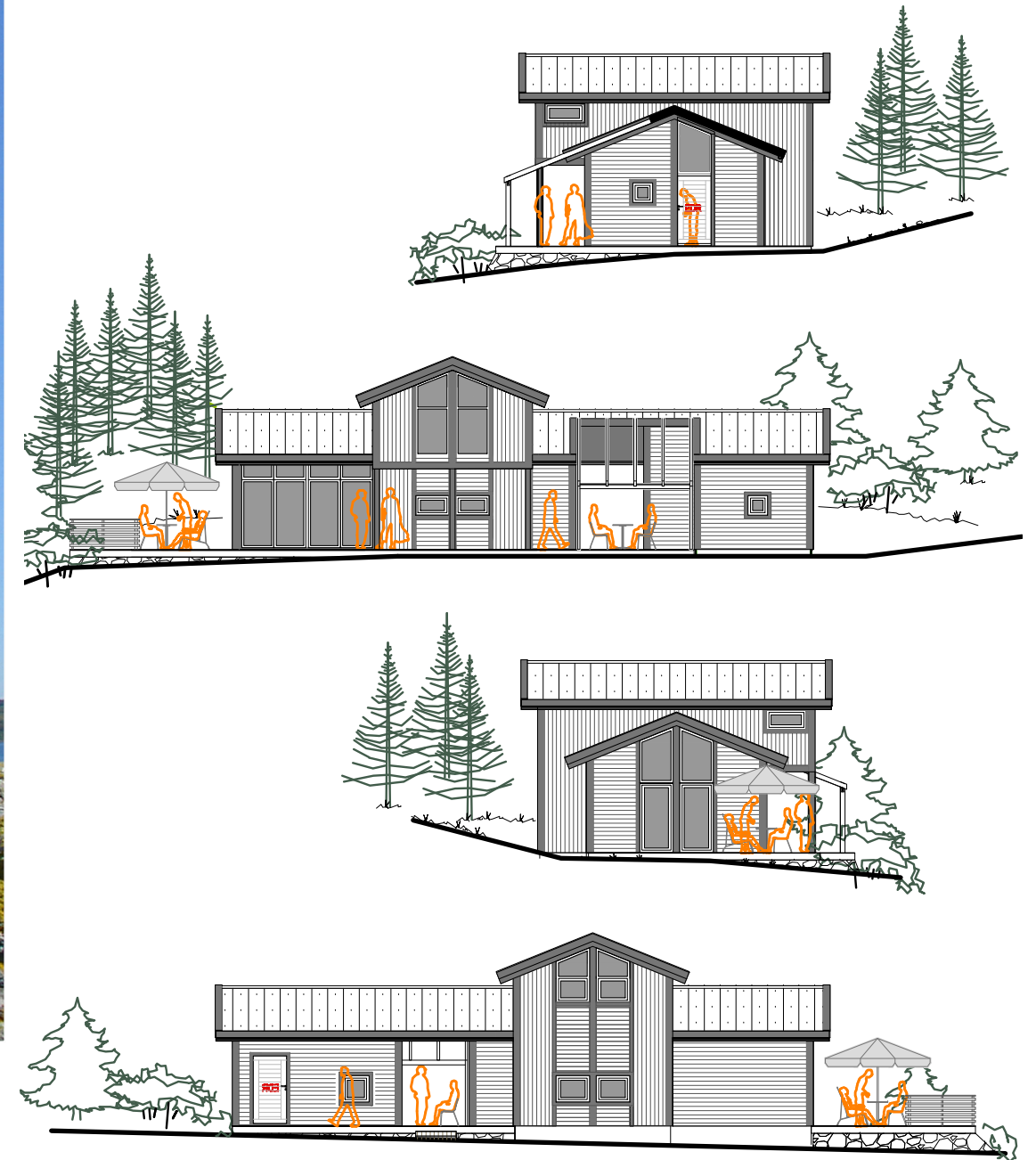


# B 105 L+



I etg. BRA: 72 m <sup>2</sup>	101 STUE 23,30 m <sup>2</sup>	107 SOVE 7,85 m <sup>2</sup>
II etg. BRA: 33 m <sup>2</sup>	102 GANG 8,44 m <sup>2</sup>	108 GANG 2,44 m <sup>2</sup>
TOTAL Lengde: 17,25 m	103 KJØK 6,14 m <sup>2</sup>	109 SAUNA 3,47 m <sup>2</sup>
TOTAL Brekke: 8,24 m	104 BAD 3,84 m <sup>2</sup>	110 LAGER 5,13 m <sup>2</sup>
BTA: 96,5 m <sup>2</sup>	105 SOVE 5,63 m <sup>2</sup>	201 STUE 15,13 m <sup>2</sup>
	106 SOVE 5,63 m <sup>2</sup>	202 GANG 6,30 m <sup>2</sup>
		203 SOVE 5,63 m <sup>2</sup>
		204 SOVE 5,63 m <sup>2</sup>



Bygherre / Eierever:  
**HAVEN**  
PROSJEKT AS

Tegningsmedforbeholdninger er, utarbeidet av oss kan bli etn vilt endring  
samtids brukte i annen sammenheng enn forutsatt. Vi lte brukte oss  
profesjonstegnere.

This drawing is the exclusive and legal property of Design 4 you AS, and may  
under no circumstances be supplied to third parties nor be used for the purpose  
of construction or manufacture without the consent of Design 4 you AS.

© Copyright - Not to be copied or forwarded to any third party without DFY's consent.



Prosjekt navn:  
**BARLIND 105 L+**  
Målestokk:  
1:200