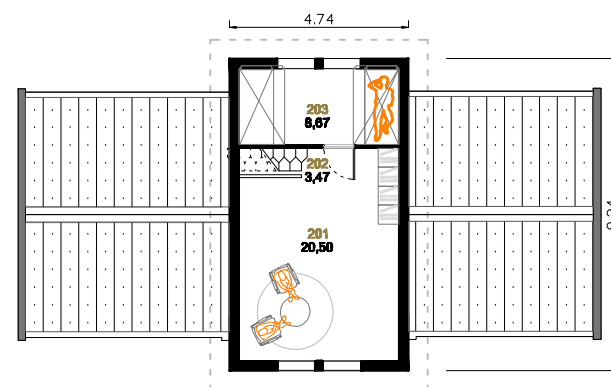
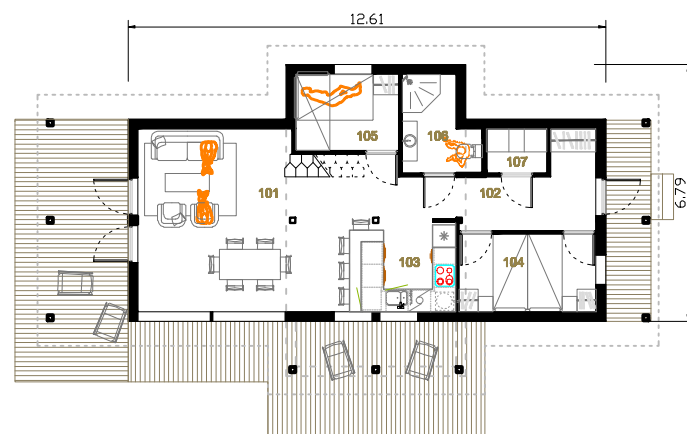
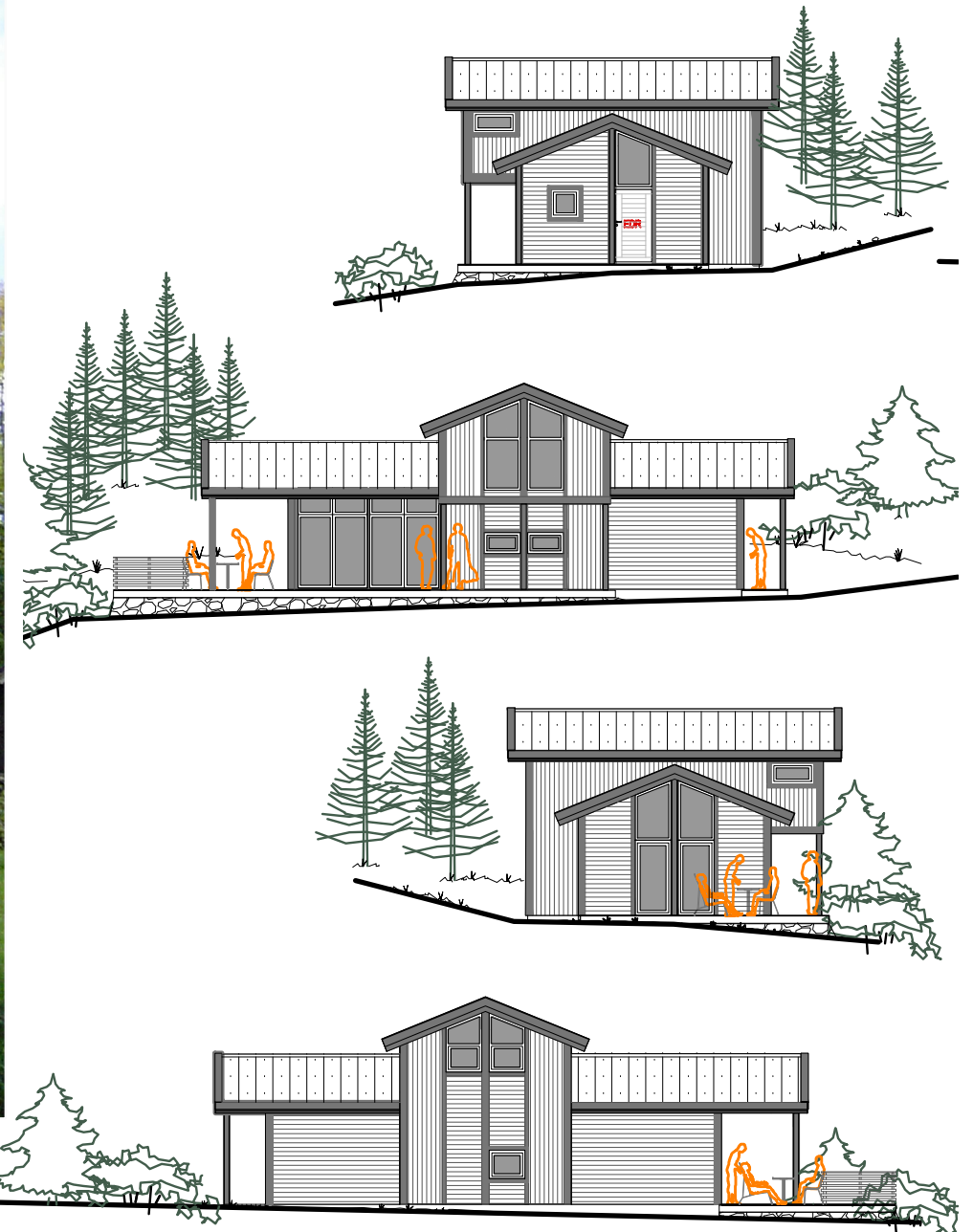


B 98 L



I etg. BRA : 64 m ²	101 STUE 27,37 m ²	201 STUE 20,50 m ²
II etg. BRA : 33 m ²	102 GANG 10,83 m ²	202 GANG 3,47 m ²
TOTAL Lengde : 12,61 m	103 KJØK 6,14 m ²	203 SOVE 8,67 m ²
TOTAL Brekke : 8,24 m	104 BAD 4,82 m ²	
BTA : 88,3 m ²	105 VASK 2,06 m ²	
	106 SOVE 5,69 m ²	
	107 SOVE 7,70 m ²	



Byggherre / tilkøper:
HAVEN
PROSJEKT AS

Tegningene er utarbeidet av design 4 you AS, utarbeidet av oss kan bli uten vidt utvalgte
ansvarlige byggherre i annen sammenheng enn herunder. Vi tar ansvar for
produktet/tegningene.

This drawing(s) is the exclusive and legal property of Design 4 you AS, and may
under no circumstances be reprinted or used for the purpose
of construction or manufacture without the consent of Design 4 you AS.

© Copyright - Not to be copied or forwarded to any third party without DFY's consent.



design 4 you as
www.dfy.no info@dfy.no



Prosjekt navn:
BARLIND 98 L
Målestokk:
1:200